



MONTHLY MEMBERSHIP PROGRESS REPORT

District 3 L

Results as of: 5/31/2015

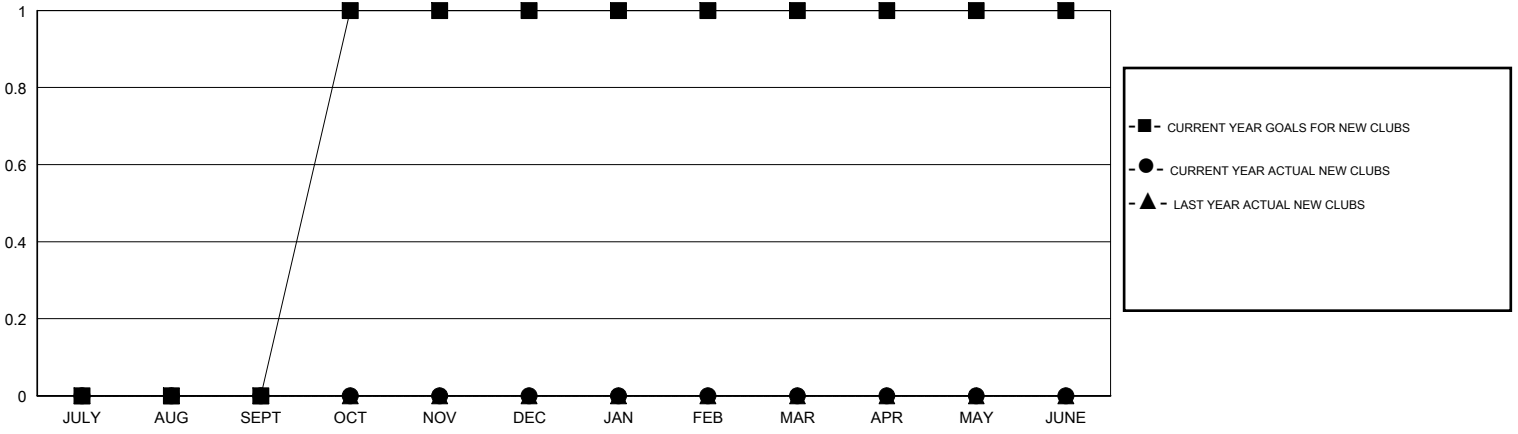
GMT: HAL GRIFFIN

LOCATION OKLAHOMA

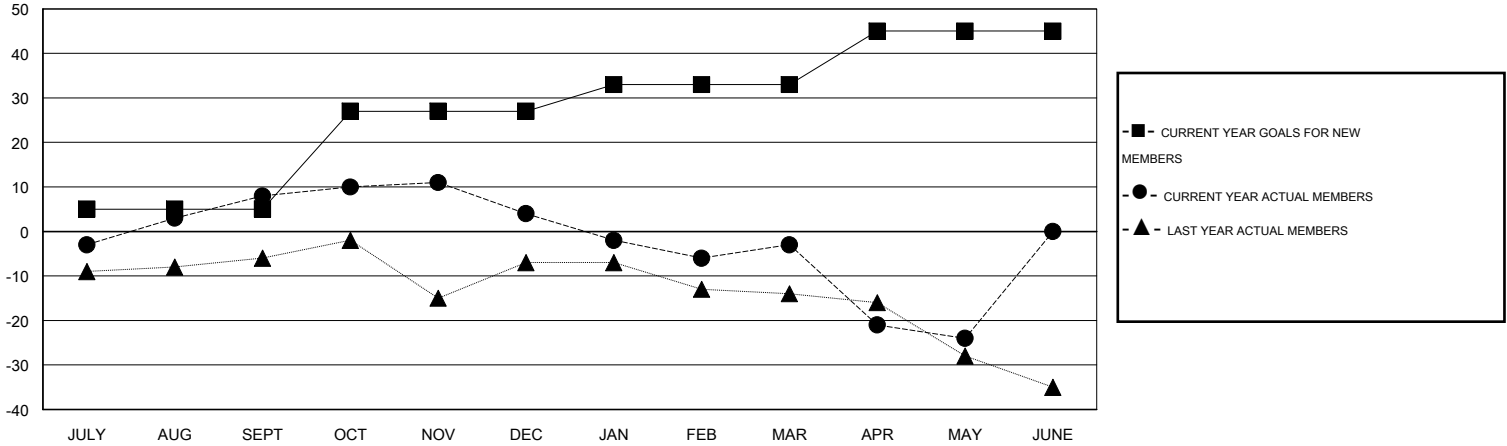
GMT CA 1

Clubs					Members				
RESULTS FOR 2014-2015					RESULTS FOR 2014-2015				
QUARTER	NEW CLUB GOAL	NEW CLUBS	DROPPED CLUBS	NET GAIN/LOSS	QUARTER	NEW MEMBER GOAL	CHARTER AND NEW MEMBERS ADDED	DROPPED MEMBERS	NET GAIN/LOSS
JULY/AUG/SEPT	0	0	0	0	JULY/AUG/SEPT	5	24	16	8
OCT/NOV/DEC	1	0	0	0	OCT/NOV/DEC	22	24	28	-4
JAN/FEB/MAR	0	0	0	0	JAN/FEB/MAR	6	18	25	-7
APR/MAY/JUNE	0	0	0	0	APR/MAY/JUNE	12	7	28	-21

GOALS AND ACTUAL NEW CLUBS CUMULATIVE



GOALS AND ACTUAL MEMBERS CUMULATIVE



DROPPED CLUBS: 0	29 CLUBS OF 36 ADDED 1 OR MORE NEW MEMBERS	<u>GENDER DISTRIBUTION</u>	
<u>DROPPED MEMBERS</u>		MALE	527 (68.00%)
DECEASED	9	FEMALE	248 (32.00%)
CLUB CANCELLED	0	FAMILY UNIT MEMBERS 113 HEAD OF HOUSEHOLD 56 NON-HEAD OF HOUSEHOLD 57	
OTHER	88		
TOTAL	97		
CLICK HERE FOR HEALTH ASSESSMENT DATA			